

INDUSTRIAL TWO LAMP

Premium Industrial Luminaire

FEATURES

Flip-up socket bars.

Available with full, half and asymmetrical reflectors.

Single piece reflectors for 6' and 8' lamps.

Continuous raceway and row mounting capability.

Surface, stem, or chain mountable.

Uses T8 or T12 lamps.

Steel housing and ends with white enamel finish.

Available in aluminum, for salty or corrosive environments.



APPLICATION FEATURES

Mid-grade, fluorescent industrial fixture. For use in indoor applications where low cost, but industrial grade ruggedness is required. Available in lengths from 18 to 96 inches. Socket bar flips up for easy installation. Converts to raceway for continuous row mounting.

APPLICATIONS

Warehouse Aisles
Warehouse Areas
Manufacturing Areas
Garage and Workshops
Utility Area
Large Storage Rooms
Coves

CONSTRUCTION

Die and brake formed, code gauge pre-painted white cold rolled steel. Screw fastened end plates can be repositioned to serve as joiners for continuous row mounting, thus forming a continuous, uninterrupted wireway (on non-welded units only). Single piece reflector on non-tandem units. Knockouts are provided for flexible conduit attachment.

MOUNTING

Knock-outs are provided for stem mounting. Mounting holes are provided. Optional V (Speedy) hangers accommodate chain (not provided).

FINISH

Pre-painted high reflectance white.

OPTICS

Standard reflectors are solid and are coated with a durable, high reflectance white finish. Optional reflectors are available with 1/2 reflector or asymmetric cutoffs. Optional reflectors are available with a slotted upright component. Optional reflector configurations are available in VF-1, high reflectance (95%) specular aluminum.

ELECTRICAL

All electrical components are UL listed or CSA approved. Lamp holders provided ensure positive lamp retention. Lamp holders with rotary locks are available. See product selection for optional ballasts. Sufficient knockouts are provided on the back and ends for connections and through wiring.

APPROVALS

Approved to CSA and UL standards. (UL, or equivalent, marked only when specified.)

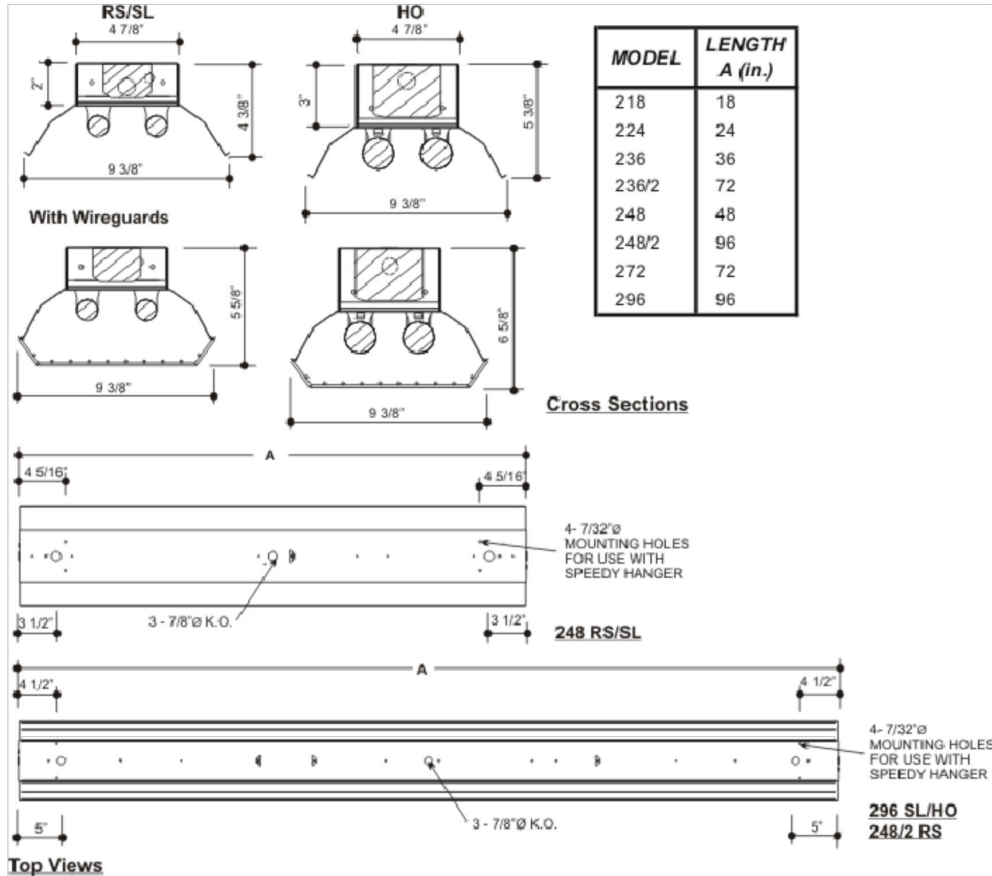
OPTIONS

- Slotted full reflector, painted white.
- 14" reflector, painted white.
- Asymmetric reflector, painted white.
- 1/2 reflector, painted white.
- VF-1- 95% reflectance, specular anodized aluminum reflector.
- 20 gauge riveted construction.
- 20 gauge welded construction.
- Dimmable ballasts, see product selection.
- Individual & custom packaging (select models only).
- No cartons - Bulk packed and wrapped on pallets.

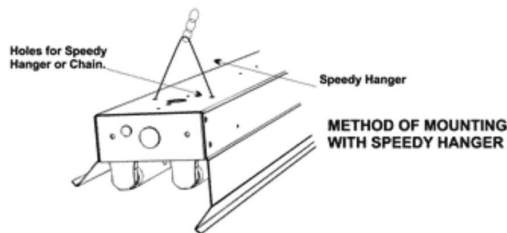
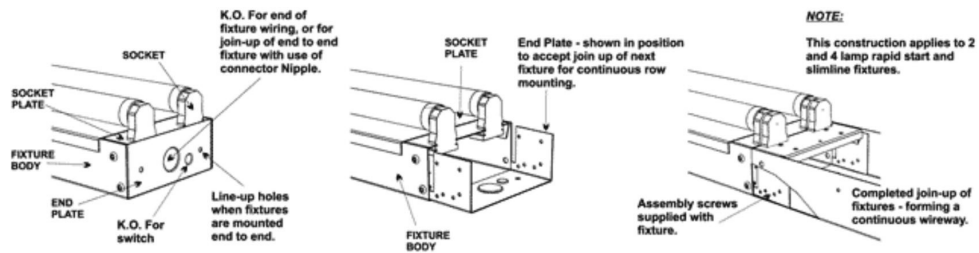
OPTIONAL ADDERS

- Heavy duty wire guards powder coated white finish, comes with mounting hardware.
- Fuse holder.
- Pull chain switch
- Aligner clips, for row mounting.
- Speedy hangers.

PRODUCT DIMENSIONS



METHOD OF ASSEMBLY FOR CONTINUOUS ROW MOUNTING



PRODUCT KEY

IND	2	48	-	T8	32	P	120	-		Options
-----	---	----	---	----	----	---	-----	---	--	---------

No. Of Lamps
Typical Number of lamps in Cross Section
2

Nom. Length (in.)
18
24
36
48
60
72
96
(Blank) - N/A
/2 - Single Housing
T2 - Two Disjointed Housings

Lamp Watts
See Table below

Lamp Type
T8
T8HO
T8VHO
T12SL
T12HO

Ballast Type
N - Instant Start
P - Prog. Start
R - Rapid Start

Voltage
120 - 120V
240 - 240V
277 - 277V
347 - 347V
600 - 600V
UNV - 120-277V
UN2 - 277-347V
UN4 - 347-480V

No. of Lamps Option (in Cross Section)
(Blank) - N/A
1L - 1 lamp
3L - 3 Lamp

Ballast Options

- B01 Ballast Disconnect - In-line Power Disconnect (CSA-UL Req'd For Voltages above 150v)
- B02 Dimming Addressable Digital (dali)
- B03 Dimming Low Voltage
- B04 Dimming Line Voltage
- B05 Frequency Universal DC-60hz
- B06 Low Temperature
- B08 Ballast - High Ballast Factor
- B09 Ballast - Low Ballast Factor

Housing Construction Options (select one only)

- C06 Housing 20 Gauge Riveted
- C07 Housing 20 Gauge Welded
- C08 Housing Aluminum

Lampholder Options

- H4 Lampholder Rotary Lock

Packaging Options (select one only)

- K0 Pack Bulk
- K1 Pack Single

Mounting Options

- M20 Mounting Row Aligner Clip
- M23 Mounting Speedy Hanger
- M30 Mounting Suspension Set (speedy hangers with 48-in chains)

Reflector Options (select one only)
(solid full white is standard)

- R03 Reflector Slotted Full White
- R04 Reflector Solid 1/2 White
- R06 Reflector Solid Asymmetrical White
- R07 Reflector Solid Full 14-in White

VF1 Reflector VF1 Solid Full (95% Reflectance) Specular

Switch Options (select one only)

- S1 Switch Pull-chain
- S5 Switch Toggle
- S6 Switch Turn

Fusing and Breaker Options (select one only)

- T5 Fuseholder, In-line Double Pole
- T6 Fuseholder, In-line Single Pole

Wiring Options

- V02 Convenience Outlet
- V08 Flexible Feed Cord (single circuit only)

Wireguard Options (select one only)

- W1 Wireguard Heavy Duty Painted
- W2 Wireguard Heavy Duty Zinc Plated

Approval and Rating Options

- X6 USA Market

Lamp Watts

Length	Nominal Lamp Watts			Lamp Length (in)	
	T8	T8HO	T8VHO	T12SL	T12HO
18	15	-	-	-	-
24	17	-	-	-	-
36	25	-	-	-	-
48	32	44	84	-	-
60	40	55	-	60	60
72	-	65	-	72	72
96	59	86	-	96	96