

## MAGIC CADILLAC

Surface Ceiling/Wall Mount Luminaire

### FEATURES

Mischief resistant. Screw fastened end caps, secures diffuser.

Clear, prismatic, acrylic diffuser.

Available with 1 or 2 lamps.

### APPLICATIONS

Corridors  
Utility Area  
Stairwells



### APPLICATION FEATURES

Economy-grade, narrow, surface mounted wraparound luminaire. Mischief resistant. Tool required to remove lighting diffuser. For use in indoor applications.

#### CONSTRUCTION

Die formed and spot welded, 22 gauge cold rolled steel housing assembly. Diffuser is held in place on both ends by the screw fastened end caps. Spot-welded for rigidity and clean appearance.

#### MOUNTING

Mounts over electrical junction box. Mounting holes are provided. Knock-outs are provided for stem mounting.

#### FINISH

Powder painted white. housing. High reflectivity coated, reflecting surfaces for improved efficiency.

#### OPTICS

Standard diffuser is a clear, prismatic, pattern #12 extruded, formed acrylic lens, designed for high efficiency and low glare illumination.

#### ELECTRICAL

All electrical components are UL listed or CSA approved Ballasts and lamp holders are replaceable without removing the luminaire from the mounting surface. Standard ballasts are electro-magnetic, energy saving where required. See product selection for optional ballasts. The standard voltage is 120V, 60 Hz, or as specified. Sufficient knockouts are provided on the back for electrical feed connection.

#### APPROVALS

Approved to CSA and UL standards. (UL, or equivalent, marked only when specified.)

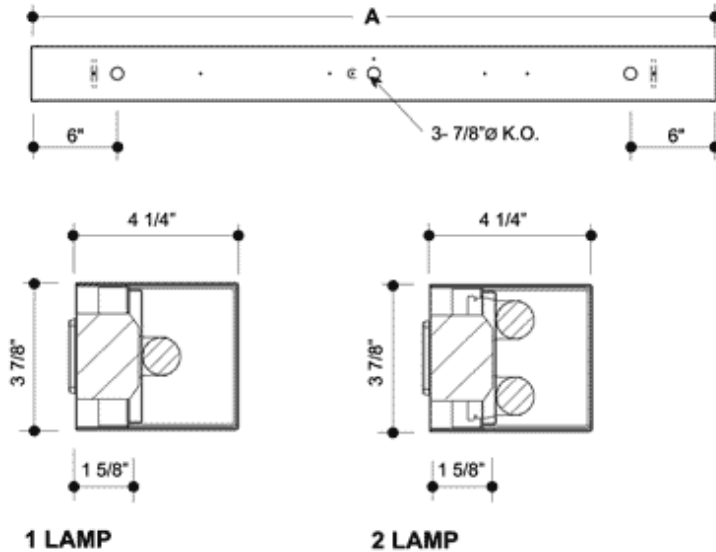
#### OPTIONS

- Black sandtex exterior.
- Opal smooth white acrylic diffuser.

#### OPTIONAL ADDERS

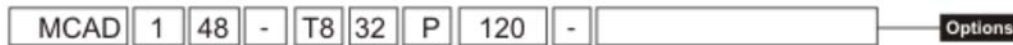
- Pull chain switch

### PRODUCT DIMENSIONS



MODEL		NOMINAL DIMENSION	A
1 LAMP	2 LAMP		
115	215	15"	15 1/16"
118	218	18"	18 1/16"
124	224	24"	24 1/16"
136	236	36"	36 1/16"
148	248	48"	48 1/16"

### PRODUCT KEY



**No. Of Lamps**  
Typical Number of lamps in Cross Section

1  
2

**Nom. Length (in.)**  
15  
18  
24  
36  
48

**Lamp Watts**  
See Table below

**Lamp Type**  
T8  
T8HO  
T8VHO

**Voltage**  
120 - 120V  
240 - 240V  
277 - 277V  
347 - 347V  
600 - 600V  
UNV - 120-277V  
UN2 - 277-347V  
UN4 - 347-480V

**Ballast Type**  
N - Instant Start  
P - Prog. Start  
R - Rapid Start

- Ballast Options**
- B01 Ballast Disconnect - In-line Power Disconnect (CSA-UL Req'd For Voltages above 150v)
  - B02 Dimming Addressable Digital (dali)
  - B03 Dimming Low Voltage
  - B04 Dimming Line Voltage
  - B05 Frequency Universal DC-60hz
  - B06 Low Temperature
  - B08 Ballast - High Ballast Factor
  - B09 Ballast - Low Ballast Factor

**Finish Options (white is standard)**

- F01 Black

**Lampholder Options**

- H4 Lampholder Rotary Lock

**Packaging Options (select one only)**

- K0 Pack Bulk
- K1 Pack Single

**Lens and Shielding Options (Prismatic P12 acrylic is standard)**

- P04 Lens Acrylic Smooth Opal

**Switch Options (select one only)**

- S1 Switch Pull-chain
- S2 Switch Pull-chain 3-way
- S5 Switch Toggle
- S6 Switch Turn

**Approval and Rating Options**

- X6 USA Market

**Lamp Watts**

Length	Nominal Lamp Watts		
	T8	T8HO	T8VHO
15	14	-	-
18	15	-	-
24	17	-	-
36	25	-	-
48	32	44	84