

High Bay Lighting Fixture

H I G H O U T P U T
S U R F A C E
U T I L I T Y
L U M I N A I R E



Light Fixtures Now available with
High Efficiency LED Tubes



f e a t u r e s

- High efficiency, high output fluorescent luminaire utilizing efficient T5 or T8 lamps
- Suitable for a variety of applications including warehouses, retail stores and other commercial spaces that are normally lit by H.I.D. lighting
- Energy efficient alternative to traditional H.I.D. lighting
- May be surface mounted or suspended
- Luminaire efficiencies exceeding 95%
- Highly specular anodized aluminum reflector 95% reflectivity
- Optional high reflectance white reflector reduces lamp imaging and glare
- Motion sensor options available

c o n s t r u c t i o n

- Die formed from code gauge cold rolled steel for strength and uniformity
- Twist-lock sockets provide secure lamp retention on T5 models
- Ample knockouts are provided on back for convenient installation
- Painted with a lighting grade baked white enamel, having a reflectance factor exceeding 87% for premium quality and durability
- Reflector material options include:
 - 95% enhanced specular aluminum reflectivity
 - 90% white aluminum reflectivityand are designed for maximum efficiency and light output
- Prior to painting, all metal parts are treated with a multi-stage phosphate bonding process to ensure adhesion and inhibit rusting
- All fixtures are U.L. listed and IBEW union made

ordering guide

SAMPLE ORDER NUMBER



SERIES NO. WATTAGE TANDEM BALLAST TYPE VOLTAGE OPTIONS* DIMENSIONS LAMP TYPE
LAMPS 1 2 (NOMINAL)

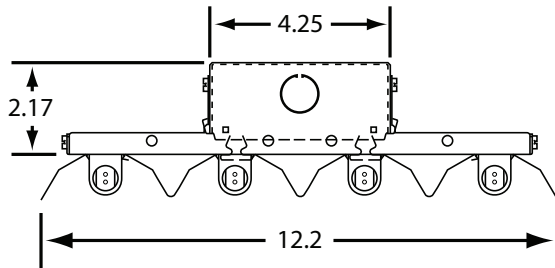
T-8 ORDERING GUIDE								
EHB	4	32		E8, H8	U		12.2" x 48"	F32T8
T-5HO ORDERING GUIDE								
EHB	4	28, 54		E5, H5	J, U3		12.2" x 48"	F28T5/F54T5HO

*MUST CHOOSE 1 REFLECTOR OPTION

dimensional data

NOTE: SPECIFICATIONS AND DIMENSIONAL DATA ARE SUBJECT TO CHANGE WITHOUT NOTICE.

back plans

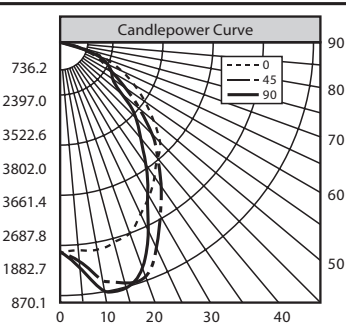


photometrics

4-Lamp T5 High Bay with R95
Lamps: F54T5HO
Rated Lumens: 5000

ZONAL LUMEN SUMMARY

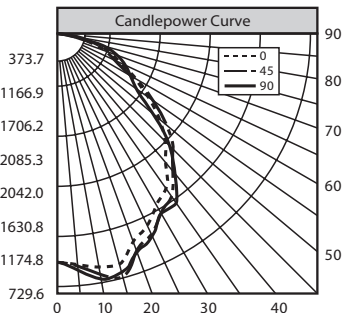
ZONE	LUMENS	%BARELAMP	%LUMINAIRE
0-30	6656	33.3	33.7
0-40	10458	52.3	53.0
0-60	16807	84.0	85.2
0-90	19731	98.7	100.0
90-120	0	0.0	0.0
90-130	0	0.0	0.0
90-150	0	0.0	0.0
90-180	0	0.0	0.0
0-180	19731	98.7	100.0



4-Lamp T8 High Bay with R95
Lamps: F32T8
Rated Lumens: 2950

ZONAL LUMEN SUMMARY

ZONE	LUMENS	%BARELAMP	%LUMINAIRE
0-30	3247	27.5	29.3
0-40	5332	45.2	48.2
0-60	9005	76.3	81.3
0-90	11072	93.8	100.0
90-120	0	0.0	0.0
90-130	0	0.0	0.0
90-150	0	0.0	0.0
90-180	0	0.0	0.0
0-180	11072	93.8	100.0



options

OPTIONS: INSERT APPROPRIATE CODE FOR CUSTOMIZED ORDERING

BALLAST

- E5 Electronic T5
- E8 Electronic T8
- H5 High output T5
- H8 High output T8

NOTE: In order to achieve rated lamp life, fixtures controlled by motion sensors should be ordered with programmed start ballasts when available and minimum time delay should be set to 15 minutes - Consult Factory

VOLTAGE

- U Universal 120 - 277V
- U3 Universal 347 - 480V (T5 only)

GENERAL OPTIONS

- EM Emergency pack, 1 lamp
90 min. up to 500 lu.
- 2C 2 Circuit
- R95 95% Reflector
- RW White reflector (aluminum)
- MS* Motion Sensor - 360 deg.
or linear coverage

*Note: Specify which lamps to be sensed

Consult Factory for additional options not shown or listed

accessories

- Stem Stem + Length needed
- AC Aircraft Cable (specify size)
- VH V Hanger (pair) for chain mounting

LAMP OPTIONS

- 13 T5/T8 841K
- 16 T5/T8 835K
- 11 T5/T8 830K
- 85 T5 850K
- 10 T8 730K
- 15 T8 735K
- 12 T8 741K