

MAGIC MAYFAIR

Premium Surface Ceiling Mount Luminaire

FEATURES

Welded steel housing with white enamel finish.

Clean appearance. No exposed fasteners.

Shallow design. Only 3" deep.

Heavy duty construction.

Clear, prismatic, acrylic diffuser.

Exclusive "Lite Lok" frame reduces light leaks.

Hinges either side. Die formed steel pin hinges.

Positive locking, cam action latches. Matching finish.

Available with 1, 2, 3, 4 or 6 lamps.

Uses T5 or T8 lamps.



APPLICATION FEATURES

Mid-level, specification grade, surface mounted ceiling luminaire. For use in indoor applications where aesthetics and quality are important. Available in 2'x2', 2'x4', 1'x4', and 4'x4' configurations.

APPLICATIONS

Office Areas
Stairwells
Corridors
Class Rooms
Hospital
Nursing Homes

CONSTRUCTION

Die formed and spot welded, 22 gauge cold rolled steel housing assembly. Spot-welded for rigidity and clean appearance. Ballast cover snaps into place eliminating the need for tools when accessing the ballast. Diffuser is held within a hinged frame door. The heavy gauge door frame hinges downward, on either side, and is held in the closed position by two positive cam latches. The metal-to-metal design of the door eliminates most light leaks.

MOUNTING

Knock-outs are provided for stem mounting. Mounting holes are provided.

FINISH

Powder painted white. visible surfaces.

OPTICS

Standard diffuser is a clear, prismatic, pattern #12 extruded acrylic lens, designed for high efficiency and low glare illumination.

ELECTRICAL

All electrical components are UL listed or CSA approved. See product selection for optional ballasts. Sufficient knockouts are provided on the back for electrical feed connection.

APPROVALS

Approved to CSA and UL standards. (UL, or equivalent, marked only when specified.)

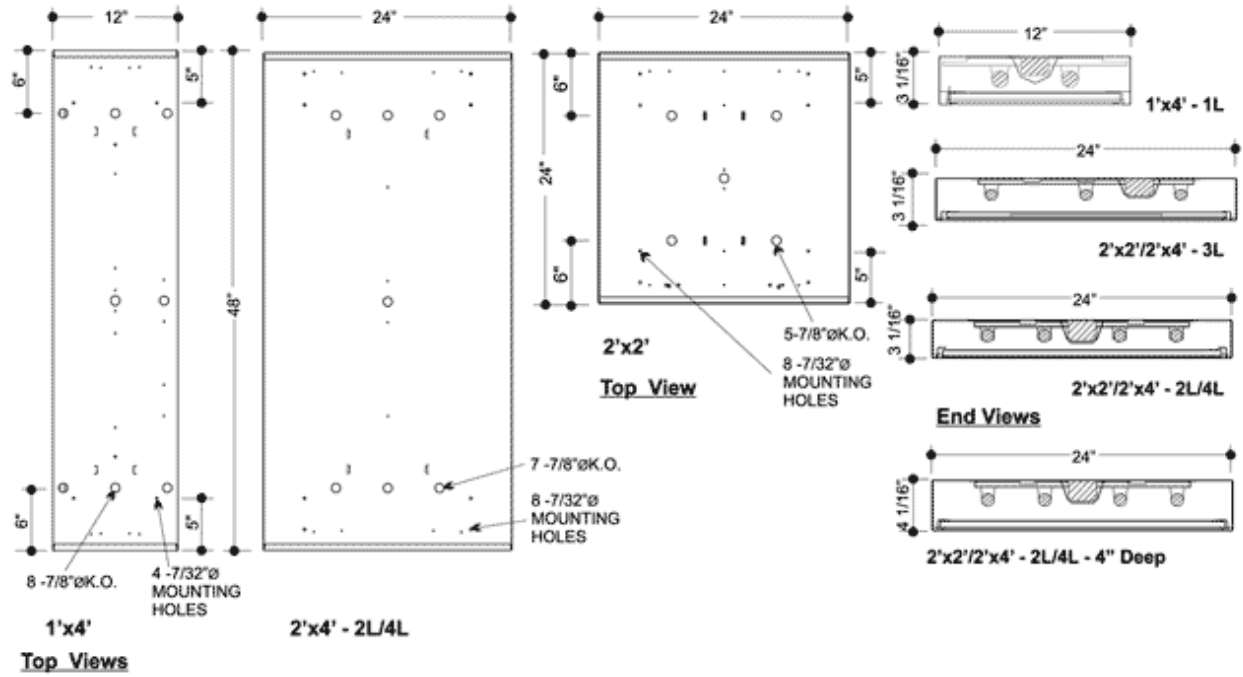
OPTIONS

- Deep housing.
- 20 gauge welded construction.
- Optional lenses and louvers, see Product Selection.
- Regressed aluminum door frame.
- VF1- 95% reflectance, specular anodized aluminum reflector.
- Consult factory for other finishes.
- Dimming ballasts, see Product Selection.
- Polycarbonate rotary lock lampholders.
- Consumer packaging.
- No cartons - Bulk packed and wrapped on pallets.

OPTIONAL ADDERS

- Fuse holder.
- Emergency lighting power pack.
- Radio interference filter.
- Lamps installed (Specify type).
- Light leak gasketing.

PRODUCT



PRODUCT KEY

MMAYS	2x4	2L	-	T8	32	P	120	-	Options
--------------	------------	-----------	----------	-----------	-----------	----------	------------	----------	----------------

Size (Width x Length)

1x4
2x2
2x4

No. of Lamps

1L
2L
3L
4L
6L

Lamp Watts
See Table below

Lamp Type

T8
T8U2
T8U6
PLL

Voltage

120 - 120V
240 - 240V
277 - 277V
347 - 347V
600 - 600V
UNV - 120-277V
UN2 - 277-347V
UN4 - 347-480V

Ballast Type

N - Instant Start
P - Prog. Start
R - Rapid Start

Ballast Options

B01 Ballast Disconnect - In-line Power Disconnect (CSA-UL Req'd For Voltages above 150v)

B02 Dimming Addressable Digital (dali)

B03 Dimming Low Voltage

B04 Dimming Line Voltage

B05 Frequency Universal DC-60hz

B06 Low Temperature

B08 Ballast - High Ballast Factor

B09 Ballast - Low Ballast Factor

B10 Remote Ballast Box

B30 Emergency USA Lighting Battery Pack 1-lamp 3000 Lumen

B31 Emergency CDN Lighting Battery Pack 1-lamp

B32 Emergency CDN Lighting Battery Pack 2-lamp

B33 Emergency USA Lighting Battery Pack 1-lamp

B34 Emergency USA Lighting Battery Pack 2-lamp

Housing Construction Options

C07 Housing 20 Gauge Welded

C10 Housing Deep 4-inch (3-inch is standard))

Door Frame Options

D2 Door Frame Regressed Aluminum

Gasket Options

G2 Gasket Light Leak

Lampholder Options

H4 Lampholder Rotary Lock

H6 Lampholder Locking Blax

Packaging Options

K0 Pack Bulk

Louver Options (in place of lens, select one only)

L11 Louver 1/2 X 1/2 X 3/8 White Eggcrate Acrylic

L12 Louver 1/2 X 1/2 X 3/8 White Eggcrate Styrene

L13 Louver 1/2 X 1/2 X 1/2 Silver Parabolic Acrylic

L14 Louver 1/2 X 1/2 X 1/2 Silver Parabolic Styrene

L15 Louver 3/4 X 3/4 X 3/8 Silver Parabolic Acrylic

L16 Louver 3/4 X 3/4 X 3/8 Silver Parabolic Styrene

L17 Louver 3/4 X 3/4 X 3/8 Gold Parabolic Acrylic

L18 Louver 3/4 X 3/4 X 3/8 Gold Parabolic Styrene

L19 Louver 3/4 X 3/4 X 1/2 Silver Parabolic Acrylic

L20 Louver 3/4 X 3/4 X 1/2 Silver Parabolic Styrene

L21 Louver 1-1/2 X 1-1/2 X 1 Silver Parabolic Acrylic

L22 Louver 1-1/2 X 1-1/2 X 1 Silver Parabolic Styrene

Lens and Shielding Options (select one only)
(Prismatic Acrylic - P12 is standard)

P01 Drop Dish Acrylic Shaped Vacuum Formed Opal

P04 Lens Acrylic Smooth Opal

P13 Lens Prismatic Acrylic - P12 Nominal 0.125" Thick

P15 Lens Prismatic High Impact Acrylic - P12

P16 Lens Prismatic Polycarbonate - P12

Fusing and Breaker Options (select one only)

T5 Fuseholder, In-line Double Pole

T6 Fuseholder, In-line Single Pole

Wiring Options

V05 Cord And Plug Set Three Wire (standard 10' X 3-18 Ga.)

V06 Flexible Feed Cord (single circuit only)

V09 Flexible Whip (standard 6' X 3-18 Ga.)

V19 Modular Wiring System. (consult Factory.)

V25 Radio Frequency Filter

Reflector Options

VF1 Reflector VF1 Specular (95% Reflectance) Aluminum

Approval and Rating Options

X6 USA Market

Lamp Options

Z1 Lamps installed (specify type)

Lamp Watts

Size	Nom. Lamp Watts			
	T8	T8U2	T8U6	PLL/ Blax
1x4	32 (1 or 2 lamps)	31 (2 or 4 lamps)	32 (2 lamps)	40, 50, 55 (2 or 4 lamps)
2x2	17 (2, 3 or 4 lamps)	31 (2, or 4 lamps)	32 (1 or 2 lamps)	40, 50, 55 (2, 3 or 4 lamps)
2x4	32 (2,3,4 lamps)	31 (4,6, or 8 lamps)	32 (2 or 4 lamps)	40, 50, 55 (4,6, or 8 lamps)