

Lighting

CL - CORNER LIGHT Surface Corner Mount Luminaire

FEATURES

Welded steel housing w
white enamel finish.

Hinged frame retains
diffuser, for easy
maintenance.

Clear, prismatic, acrylic
diffuser.

Available with 1, 2 or 3
lamps.

Uses T5 or T8 lamps.



APPLICATIONS

Stairwells
Corridors
Hospital
Nursing Homes
Chronic Care Facilities
Locker Rooms
Fitting Rooms

APPLICATION FEATURES

Specification-grade, corner mounted fluorescent luminaire. For use in indoor applications. Available in 2, 3 and 4 foot lengths. Comes in 1, 2 or 3 lamp cross-sections. Provisions for continuous row mounting. Mounts over electrical junction box.

CONSTRUCTION

Welded and brake formed, code gauge cold rolled steel. Spot-welded for rigidity and clean appearance. Diffuser is held within a hinged frame door. Hinge is concealed. The metal-to-metal design of the door eliminates most light leaks. End caps may be butted together for continuous row mounting. Flattened knockouts are provided on ends for through wiring.

MOUNTING

Mounting holes are provided. Mounts over electrical junction box.

FINISH

Powder painted high reflectance white housing.

OPTICS

Standard diffuser is a clear, prismatic, pattern #12 extruded acrylic lens, designed for high efficiency and low glare illumination. Optional shielding is available. See Product Key for alternate configurations.

ELECTRICAL

All electrical components are UL listed or CSA approved Ballasts and lamp holders are replaceable without removing the luminaire from the mounting surface. See product selection for optional ballasts. Sufficient knockouts are provided on the back and ends for connections and through wiring.

APPROVALS

Approved to CSA and UL standards. (UL, or equivalent, marked only when specified.)

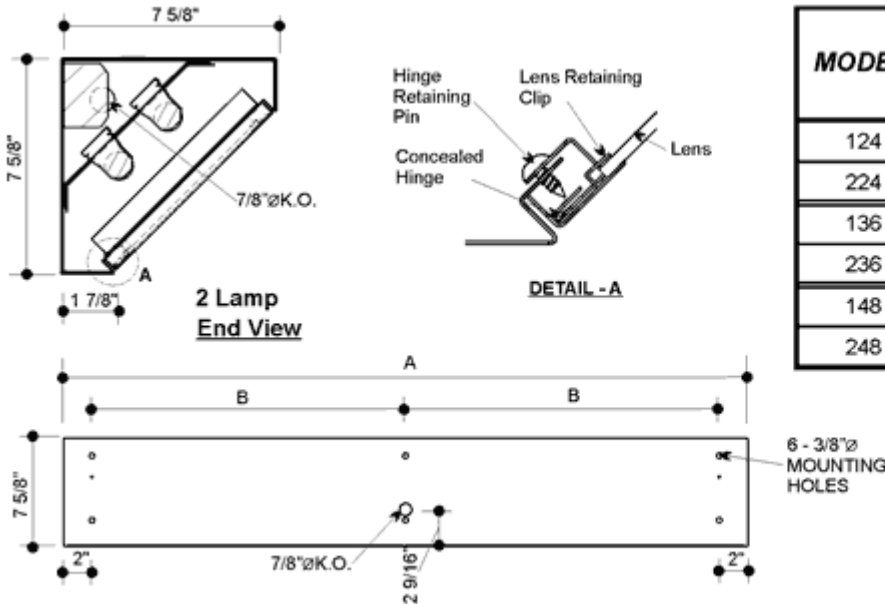
OPTIONS

- Vandal resistant door frame.
- Tamperproof fasteners.
- Polycarbonate rotary lock lampholders.
- Electronic ballasts and dimming ballasts, see Product Selection.
- Consult factory for other finishes.
- Acrylic lens #12 pattern, 0.125" thick.
- Clear prismatic polycarbonate lens.
- No cartons - Bulk packed and wrapped on pallets.

OPTIONAL ADDERS

- Fuse holder.
- Emergency lighting power pack.
- Radio interference filter.
- Lamps included but not installed.
-

Product Dimensions



MODEL	NOMINAL LENGTH	A	B
124	24"	24 1/4"	10 1/8"
224			
136	36"	36 1/4"	16 1/8"
236			
148	48"	48 1/4"	22 1/8"
248			

Top and Back View

Product Key

CL	1	48	-	T8	32	P	120	-	Options
----	---	----	---	----	----	---	-----	---	---------

No. Of Lamps
 Typical Number of lamps in Cross Section
 1
 2

Nom. Length (in.)
 24
 36
 48

Lamp Watts
 See Table below

Lamp Type
 T8
 T8HO
 T8VHO

Voltage
 120 ~ 120V
 240 ~ 240V
 277 ~ 277V
 347 ~ 347V
 600 ~ 600V
 UNV ~ 120-277V
 UN2 ~ 277-347V
 UN4 ~ 347-480V

Ballast Type
 N - Instant Start
 P - Prog. Start
 R - Rapid Start

Ballast Options

- B01 Ballast Disconnect - In-line Power Disconnect (CSA-UL Req'd For Voltages above 150v)
- B02 Dimming Addressable Digital (dali)
- B03 Dimming Low Voltage
- B04 Dimming Line Voltage
- B05 Frequency Universal DC-60hz
- B06 Low Temperature
- B08 Ballast - High Ballast Factor
- B09 Ballast - Low Ballast Factor
- B30 Emergency USA Lighting Battery Pack 1-lamp 3000 Lumen
- B31 Emergency CDN Lighting Battery Pack 1-lamp
- B32 Emergency CDN Lighting Battery Pack 2-lamp
- B33 Emergency USA Lighting Battery Pack 1-lamp
- B34 Emergency USA Lighting Battery Pack 2-lamp

Housing Construction Options (select one only)

- C03 Tamper Proof Fasteners

Door Options

- D5 Door Frame Vandal Resistant

Gasketing Options

- G2 Gasket light Leak

Lampholder Options

- H4 Lampholder Rotary Lock

Packaging Options (select one only)

- K0 Pack Bulk
- K1 Pack Single

Lens and Shielding Options (select one only)
 (clear prismatic #P12 acrylic is standard)

- P13 Lens Prismatic Acrylic - P12 Nominal .125" Thick
- P16 Lens Prismatic Polycarbonate - P12

Fusing and Breaker Options (select one only)

- T5 Fuseholder, In-line Double Pole
- T6 Fuseholder, In-line Single Pole

Wiring Options

- V02 Convenience Outlet

Approval and Rating Options

- X6 USA Market

Lamp Options

- Z1 Lamps installed (specify type)

Lamp Watts

Length	Nominal Lamp Watts		
	T8	T8HO	T8VHO
24	17	-	-
36	25	-	-
48	32	44	84