

SCBA - SURFACE CENTRE BASKET A Surface Direct/Indirect Luminaire

FEATURES

Single, basket shaped perforated metal shield.

Translucent, opal white acrylic diffuser overlay.

Clean appearance. No exposed fasteners.

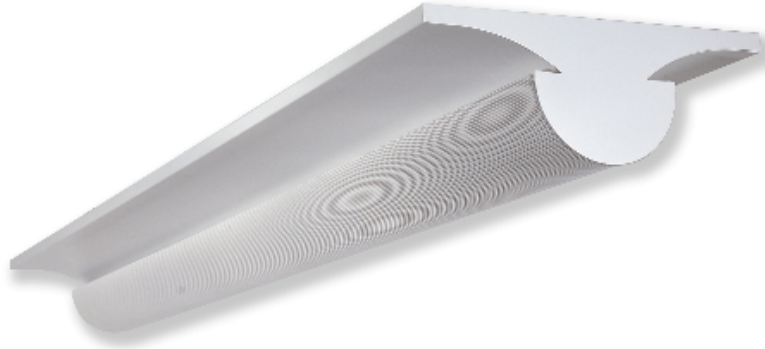
Easy re-lamping and re-ballasting.

Surface, stem, or chain mountable.

Continuous raceway and row mounting capability.

Available with 2 or 3 lamps.

Uses T5 or T8 lamps.



APPLICATIONS

Office Areas
Retail Stores
Class Rooms
Corridors

APPLICATION FEATURES

Premium-grade, surface mounted, high visual comfort direct/indirect fluorescent luminaire. Comes with single basket shaped perforated metal shield. Available in 2'x2', 2'x4', and 1'x4' configurations. For use in indoor applications where low glare, high quality and ease of installation are required. Suitable for surface or suspended mounting individually or in continuous rows.

CONSTRUCTION

Die formed and riveted, heavy gauge cold rolled steel housing assembly. Precision formed, cold rolled steel reflector. Die formed, perforated cold rolled steel shielding. Metal shielding flexes over mounting studs on housing, for easy installation and re-lamping. End caps may be butted together for continuous row mounting.

MOUNTING

Mounts over electrical junction box. Mounting holes are provided. Knock-outs are provided for stem mounting.

FINISH

Powder painted matte white visible surfaces.

OPTICS

Shields are perforated for direct illumination and contain a translucent opal white acrylic overlay diffuser for visual comfort. Optional integrated metal crossblade baffle with white overlay provides low glare while increasing the direct illumination and overall efficiency. Indirect reflectors are precision formed and contoured to provide soft, low glare indirect illumination while maintaining high efficiency and a wide uniform lighting distribution.

ELECTRICAL

All electrical components are UL listed or CSA approved Lamp holders provided ensure positive lamp retention. The standard voltage is 120-277V, 60 Hz, or as specified. Other voltages and suitable for 50-60 Hz are also available. Sufficient knockouts are provided for connections and through wiring.

APPROVALS

Approved to CSA and UL standards. (UL, or equivalent, marked only when specified.)

OPTIONS

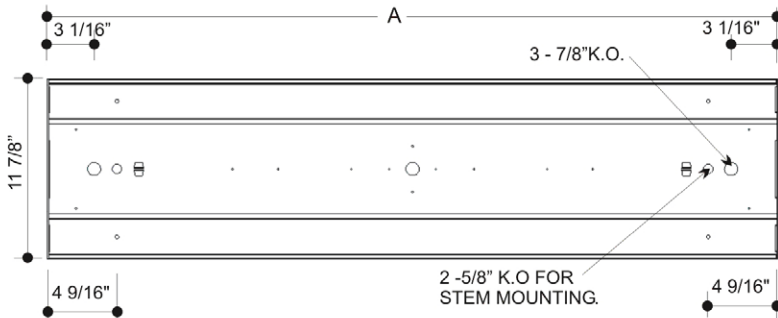
- Welded construction.
- Integrated metal crossblade baffle.
- Optional lenses, see Product Selection.

OPTIONAL ADDERS

-

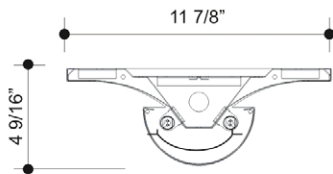
Lighting

Product Dimensions

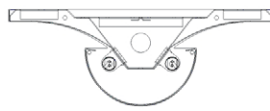


MODEL	NOMINAL LENGTH	A
1x4	48"	48"
2x4		
2x2	24	24

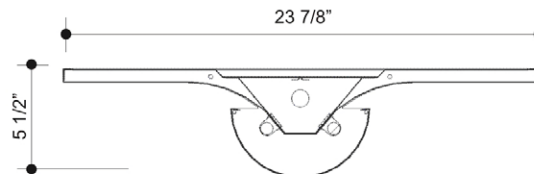
Top View



1X4 2 LAMP SHOWN.
OPTIONAL RADIAL
CROSS Baffle SHOWN



1X4 2 LAMP SHOWN.
PERFORATED BASKET



2X2/2x4 2 LAMP SHOWN.

End Views

Product Key

SCBA	2x4	2L	-	T8	32	P	120	-	Options																																			
Size (Width x Length)		No. of Lamps		Lamp Watts		Voltage		Ballast Options																																				
1x4 2x2 2x4		2L 3L		See Table below		120 - 120V 240 - 240V 277 - 277V 347 - 347V 600 - 600V UNV - 120-277V UN2 - 277-347V UN4 - 347-480V		<input type="checkbox"/> B01 Ballast Disconnect - In-line Power Disconnect (CSA-UL Req'd For Voltages above 150v) <input type="checkbox"/> B02 Dimming Addressable Digital (dali) <input type="checkbox"/> B03 Dimming Low Voltage <input type="checkbox"/> B04 Dimming Line Voltage <input type="checkbox"/> B08 Ballast - High Ballast Factor <input type="checkbox"/> B09 Ballast - Low Ballast Factor <input type="checkbox"/> B30 Emergency USA Lighting Battery Pack 1-lamp 3000 Lumen <input type="checkbox"/> B31 Emergency CDN Lighting Battery Pack 1-lamp <input type="checkbox"/> B32 Emergency CDN Lighting Battery Pack 2-lamp <input type="checkbox"/> B33 Emergency USA Lighting Battery Pack 1-lamp <input type="checkbox"/> B34 Emergency USA Lighting Battery Pack 2-lamp																																				
Lamp Watts		Lamp Type		Ballast Type																																								
<table border="1"> <thead> <tr> <th>Size</th> <th colspan="6">Nom. Lamp Watts</th> </tr> <tr> <th></th> <th>T5</th> <th>T5HO</th> <th>T8</th> <th>T8HO</th> <th>T8VHO</th> <th>BIAX</th> </tr> </thead> <tbody> <tr> <td>1x4</td> <td>28</td> <td>54</td> <td>32</td> <td>44</td> <td>84</td> <td>40, 50, 55</td> </tr> <tr> <td>2x2</td> <td>14</td> <td>24</td> <td>17</td> <td>-</td> <td>-</td> <td>40, 50, 55</td> </tr> <tr> <td>2x4</td> <td>28</td> <td>54</td> <td>32</td> <td>44</td> <td>84</td> <td>40, 50, 55</td> </tr> </tbody> </table>		Size	Nom. Lamp Watts							T5	T5HO	T8	T8HO	T8VHO	BIAX	1x4	28	54	32	44	84	40, 50, 55	2x2	14	24	17	-	-	40, 50, 55	2x4	28	54	32	44	84	40, 50, 55	PLL T5 T5HO T8 T8HO T8VHO		N - Instant Start P - Prog. Start R - Rapid Start		Housing Construction Options <input type="checkbox"/> C07 Housing 20 Gauge Welded Lampholder Options <input type="checkbox"/> H4 Lampholder Rotary Lock <input type="checkbox"/> H6 Lampholder BIAX Locking Packaging Options <input type="checkbox"/> K0 Bulk Pack Mounting Options (free standing (two-ends) is standard) <input type="checkbox"/> M01 Aircraft Cable & Canopy Set (48-inch standard) <input type="checkbox"/> M02 Mounting - End Run (one end) (required for beginning or end of row) <input type="checkbox"/> M03 Mounting - Middle Section Approval and Rating Options <input type="checkbox"/> X6 USA Market <input type="checkbox"/> X7 CSA and USA Market			
Size	Nom. Lamp Watts																																											
	T5	T5HO	T8	T8HO	T8VHO	BIAX																																						
1x4	28	54	32	44	84	40, 50, 55																																						
2x2	14	24	17	-	-	40, 50, 55																																						
2x4	28	54	32	44	84	40, 50, 55																																						