

Lighting

MAGIC CADILLAC

Surface Ceiling/Wall Mount Luminaire

FEATURES

Mischief resistant. Screw fastened end caps, secures diffuser.

Clear, prismatic, acrylic diffuser.

Available with 1 or 2 lamps.

APPLICATIONS

Corridors
Utility Area
Stairwells



APPLICATION FEATURES

Economy-grade, narrow, surface mounted wraparound luminaire. Mischief resistant. Tool required to remove lighting diffuser. For use in indoor applications.

CONSTRUCTION

Die formed and spot welded, 22 gauge cold rolled steel housing assembly. Diffuser is held in place on both ends by the screw fastened end caps. Spot-welded for rigidity and clean appearance.

MOUNTING

Mounts over electrical junction box. Mounting holes are provided. Knock-outs are provided for stem mounting.

FINISH

Powder painted white. housing. High reflectivity coated, reflecting surfaces for improved efficiency.

OPTICS

Standard diffuser is a clear, prismatic, pattern #12 extruded, formed acrylic lens, designed for high efficiency and low glare illumination.

ELECTRICAL

All electrical components are UL listed or CSA approved Ballasts and lamp holders are replaceable without removing the luminaire from the mounting surface. Standard ballasts are electro-magnetic, energy saving where required. See product selection for optional ballasts. The standard voltage is 120V, 60 Hz, or as specified. Sufficient knockouts are provided on the back for electrical feed connection.

APPROVALS

Approved to CSA and UL standards. (UL, or equivalent, marked only when specified.)

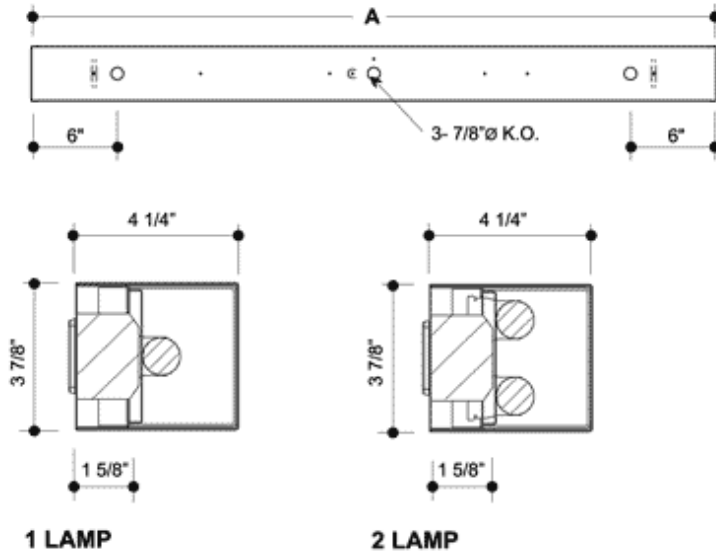
OPTIONS

- Black sandtex exterior.
- Opal smooth white acrylic diffuser.

OPTIONAL ADDERS

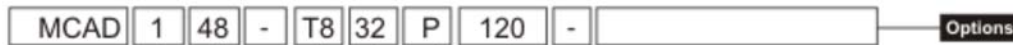
- Pull chain switch

PRODUCT DIMENSIONS



MODEL		NOMINAL DIMENSION	A
1 LAMP	2 LAMP		
115	215	15"	15 1/16"
118	218	18"	18 1/16"
124	224	24"	24 1/16"
136	236	36"	36 1/16"
148	248	48"	48 1/16"

PRODUCT KEY



No. Of Lamps
Typical Number of lamps in Cross Section

1

2

Nom. Length (in.)

15
18
24
36
48

Lamp Watts
See Table below

Lamp Type

T8
T8HO
T8VHO

Voltage

120 - 120V
240 - 240V
277 - 277V
347 - 347V
600 - 600V
UNV - 120-277V
UN2 - 277-347V
UN4 - 347-480V

Ballast Type

N - Instant Start
P - Prog. Start
R - Rapid Start

Ballast Options

- B01 Ballast Disconnect - In-line Power Disconnect (CSA-UL Req'd For Voltages above 150v)
- B02 Dimming Addressable Digital (dali)
- B03 Dimming Low Voltage
- B04 Dimming Line Voltage
- B05 Frequency Universal DC-60hz
- B06 Low Temperature
- B08 Ballast - High Ballast Factor
- B09 Ballast - Low Ballast Factor

Finish Options (white is standard)

- F01 Black

Lampholder Options

- H4 Lampholder Rotary Lock

Packaging Options (select one only)

- K0 Pack Bulk
- K1 Pack Single

Lens and Shielding Options (Prismatic P12 acrylic is standard)

- P04 Lens Acrylic Smooth Opal

Switch Options (select one only)

- S1 Switch Pull-chain
- S2 Switch Pull-chain 3-way
- S5 Switch Toggle
- S6 Switch Turn

Approval and Rating Options

- X6 USA Market

Lamp Watts

Length	Nominal Lamp Watts		
	T8	T8HO	T8VHO
15	14	-	-
18	15	-	-
24	17	-	-
36	25	-	-
48	32	44	84