

DEEP CELL RECESSED T-BAR

Recessed Deep Cell Parabolic T-Bar Luminaire

FEATURES

Deep cell aluminum parabolic louver (Nominal 3")

Louver manufactured from low iridescent anodized aluminum.

Shallow design. Only 5" deep.

Hinges either side. Die formed steel T-hinges.

Positive locking, cam action latches. Matching finish.

Black reveal.

Air functions - choice of static, air supply or heat removal.

Integral earthquake clips.

Access plate for quick wiring.



APPLICATION FEATURES

Mid-level, specification grade, recessed, high performance, lay-in deep cell parabolic T-Bar troffer designed for maximum efficiency and visual comfort. Available in 2'x2', 2'x4', and 1'x4' configurations. Available with various lamp and parabolic cell configurations. Shallow design accommodates mounting into low ceiling plenums. Static fixtures are standard, however air supply and heat removal functions are available as options. For use in indoor applications.

APPLICATIONS

Office Areas
Retail Stores

CONSTRUCTION

Die formed, code gauge pre-painted white cold rolled steel housing. Die formed, cold rolled steel reveal. Precision formed, anodized no. 603 semi-specular aluminum, louver. Standard nominal 3" deep cell louvers are 2 13/16" deep and are manufactured using interlocked construction and mitred corners. Wiring access plate or knockouts are provided on back of housing, for flexible conduit attachment. Ballast cover snaps into place eliminating the need for tools when accessing the ballast. A protective film or bag is provided to protect the louver and fixture from construction dust. Louver hinges from either side using die formed steel T-hinges. Latches use a positive locking cam action and come with matching finish.

MOUNTING

Lay-in type fixture for exposed grid type acoustical ceiling structure. Holes provided for chain mounting support to building structure. Integral earthquake clips.

FINISH

Pre-painted high reflectance white housing components. Powder painted black. reveal.

OPTICS

Standard nominal 3" deep cell louvers are made with a semi-specular silver finish. Optional louver finishes in champagne, gold, and white are available also in full specular and low iridescent material. Optional VF-1 reflectors are available. VF-1 reflectors are made of specular PVD aluminum, colourfree with a minimum reflectivity of 95%. Optional overlays are manufactured from a high translucence, extruded white acrylic.

ELECTRICAL

All electrical components are UL listed or CSA approved See product selection for optional ballasts. Sufficient knockouts are provided for connections and through wiring. Fixtures are provided with an access plate, to facilitate wiring to external power source. Approximately 6" ballast leads extend through wiring access cover, in order to facilitate external wiring of luminaire.

APPROVALS

Approved to CSA and UL standards. (UL, or equivalent, marked only when specified.)

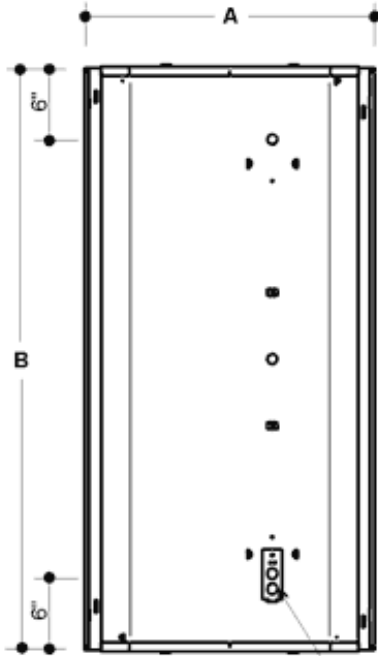
OPTIONS

- Dimmable ballasts, see product selection.
- 20 gauge riveted construction.
- Polycarbonate rotary lock lampholders.
- Louver configurations, depths and finishes. See Product Selection.
- VF-1- 95% reflectance, specular anodized aluminum reflector.
- Air supply/return slots.
- Note: Air supply slots on 1x4 units require the use of a deeper housing. (Consult factory.)
- Heat removal vents.
- White reveal.
- Powder painted finish.
- Spring loaded cam latches.
- Shallow housing for limited plenum access.
- No cartons - Bulk packed and wrapped on pallets.

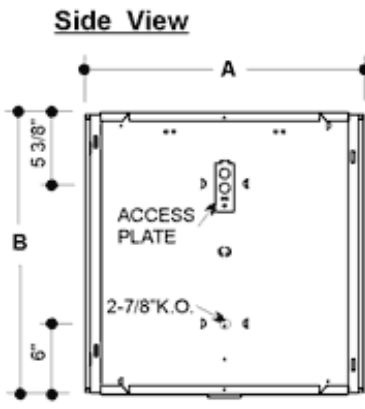
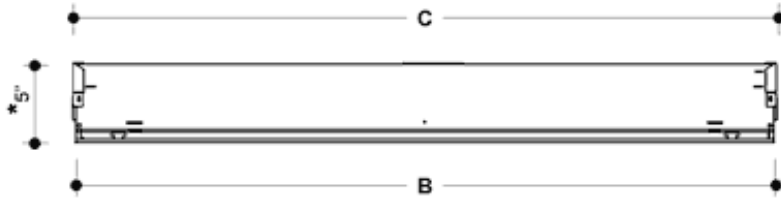
OPTIONAL ADDERS

- Emergency lighting power pack.
- Extra ballast cover (for symmetry).
- Acrylic translucent overlay.
- Flexible metal whip - 6' x 3/18 gauge conductors.
- Fuse holder.
- Radio interference filter.

PRODUCT DIMENSIONS

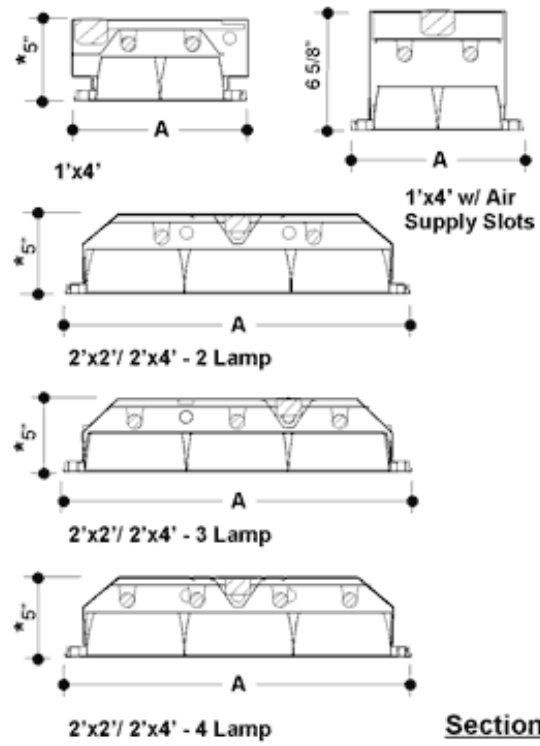


ACCESS PLATE



ACCESS PLATE

2-7/8" K.O.



MODEL CONFIGURATION	A	B	C
1'x4'	11 3/4"	47 3/4"	48"
2'x2'	23 3/4"	23 3/4"	24"
2'x4'	23 3/4"	47 3/4"	48"

* HOUSING DEPTH 5 1/2" PRIOR TO MID 2002.

PRODUCT KEY

DCTB	2x4	2L	-	T8	32	P	120	-	2x6	-	Options
------	-----	----	---	----	----	---	-----	---	-----	---	----------------

<p>No. of Lamps</p> <p>1L 2L 3L 4L 6L* 8L*</p> <p>Size (Width x Length)</p> <p>2x2 2x4</p> <p>* 2x4 size PLL lamps only</p> <p>Lamp Type</p> <p>T8 T8U2 T8U6 PLL</p> <p>Lamp Watts</p> <p>See Table below</p> <p>Ballast Type</p> <p>N - Instant Start P - Prog. Start R - Rapid Start</p>	<p>Voltage</p> <p>120 - 120V 240 - 240V 277 - 277V 347 - 347V 600 - 600V UNV - 120-277V UN2 - 277-347V UN4 - 347-480V</p> <p>Deep Cell Louver Configuration</p> <p>See Table below</p>	<p>Air Handling Options</p> <p><input type="checkbox"/> A1 Air Supply/Return Slots <input type="checkbox"/> A2 Air Heat Removal Vents</p> <p>Ballast Options</p> <p><input type="checkbox"/> B01 Ballast Disconnect - In-line Power Disconnect (CSA-UL Req'd For Voltages above 150v) <input type="checkbox"/> B02 Dimming Addressable Digital (dall) <input type="checkbox"/> B03 Dimming Low Voltage <input type="checkbox"/> B04 Dimming Line Voltage <input type="checkbox"/> B05 Frequency Universal DC-60hz <input type="checkbox"/> B06 Low Temperature <input type="checkbox"/> B08 Ballast - High Ballast Factor <input type="checkbox"/> B09 Ballast - Low Ballast Factor <input type="checkbox"/> B10 Remote Ballast Box <input type="checkbox"/> B30 Emergency USA Lighting Battery Pack 1-lamp 3000 Lumen <input type="checkbox"/> B31 Emergency CDN Lighting Battery Pack 1-lamp <input type="checkbox"/> B32 Emergency CDN Lighting Battery Pack 2-lamp <input type="checkbox"/> B33 Emergency USA Lighting Battery Pack 1-lamp <input type="checkbox"/> B34 Emergency USA Lighting Battery Pack 2-lamp</p> <p>Housing Construction Options</p> <p><input type="checkbox"/> C01 Extra Ballast Cover <input type="checkbox"/> C06 Housing 20 Gauge Riveted <input type="checkbox"/> C15 Latches Spring Loaded <input type="checkbox"/> C23 White Reveal (black is standard)</p> <p>Finish Options</p> <p><input type="checkbox"/> F02 Post Powder Painted (White)</p> <p>Lampholder Options</p> <p><input type="checkbox"/> H4 Lampholder Rotary Lock</p> <p>Packaging Options</p> <p><input type="checkbox"/> K0 Pack Bulk</p> <p>Louver Options (Semi-specular clear aluminum 2-11/16-inch depth standard)</p> <p><input type="checkbox"/> L06 Deep Cell Louver Finish Specular Clear Aluminum <input type="checkbox"/> L07 Deep Cell Louver Finish Specular Gold <input type="checkbox"/> L08 Deep Cell Louver Finish Semi-specular Gold <input type="checkbox"/> L09 Deep Cell Louver Depth 3-inch <input type="checkbox"/> L10 Deep Cell Louver Depth 1-3/8-inch <input type="checkbox"/> L24 Louver White</p> <p>Lens and Shielding Options</p> <p><input type="checkbox"/> P02 Lens Acrylic Overlay</p> <p>Fusing and Breaker Options (select one only)</p> <p><input type="checkbox"/> T5 Fuseholder, In-line Double Pole <input type="checkbox"/> T6 Fuseholder, In-line Single Pole</p> <p>Wiring Options</p> <p><input type="checkbox"/> V05 Cord And Plug Set Three Wire (standard 10' X 3-18 Ga.) <input type="checkbox"/> V08 Flexible Cord Feed (single Circuit Cord) <input type="checkbox"/> V09 Flexible Whip (standard 6' X 3-18 Ga.) <input type="checkbox"/> V17 Master / Slave Wiring Master Unit (contains Ballasts) <input type="checkbox"/> V18 Master / Slave Wiring Slave Unit (contains No Ballast) <input type="checkbox"/> V19 Modular Wiring System. (consult Factory.) <input type="checkbox"/> V25 Radio Frequency Filter</p> <p>Reflector Options</p> <p><input type="checkbox"/> VF1 Reflector VF1 Specular (95% Reflectance) Aluminum</p> <p>Approval and Rating Options</p> <p><input type="checkbox"/> X6 USA Market</p> <p>Lamp Options</p> <p><input type="checkbox"/> Z1 Lamps installed (specify type)</p>
---	--	--

Lamp Watts

Size	Nom. Lamp Watts			
	T8	T8U2	T8U6	PLL/ Biax
1x4	32 (1 or 2 lamps)	31 (2 or 4 lamps)	32 (2 lamps)	40, 50, 55 (2 or 4 lamps)
2x2	17 (2, 3 or 4 lamps)	31 (2, or 4 lamps)	32 (1 or 2 lamps)	40, 50, 55 (2, 3 or 4 lamps)
2x4	32 (2, 3, 4 lamps)	31 (4, 6, or 8 lamps)	32 (2 or 4 lamps)	40, 50, 55 (4, 6, or 8 lamps)

Deep Cell Louver Configurations

Size	Total Cells							
	6	8	9	12	16	18	24	32
1x4	1x6	1x8	1x9	-	2x8	2x9	-	-
2x2	-	-	3x3	-	4x4	-	-	-
2x4	-	-	-	2x6	-	3x6	3x8	4x8