

### MAGIC MAYFAIR RECESSED

Recessed Drywall Luminaire

#### FEATURES

Press fit end flanges remove to allow for continuous row mounting.

Swing arm mounting brackets.

Clear, prismatic, acrylic diffuser.

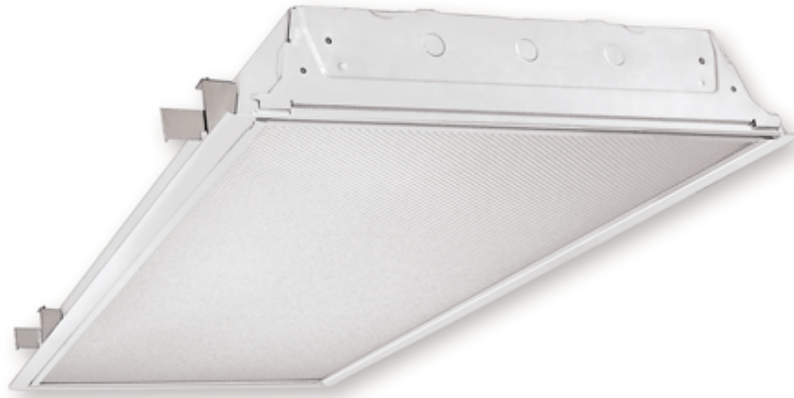
Exclusive "Lite Lok" frame reduces light leaks.

Hinges either side.

Positive locking, cam action latches. Matching finish.

Available with 1, 2, 3, 4 or 6 lamps.

Uses T5 or T8 lamps.



#### APPLICATION FEATURES

Mid-level, specification grade, recessed flanged drywall luminaire with framed door. Available in 2'x2', 2'x4', and 1'x4' configurations. Available with high reflectance (95%) VF-1 reflector. For use in indoor applications.

#### APPLICATIONS

Office Areas  
Retail Stores  
Recreation Rooms  
Hospital

#### CONSTRUCTION

Die formed, code gauge cold rolled steel housing assembly. Ballast cover snaps into place eliminating the need for tools when accessing the ballast. Diffuser is held within a hinged frame door. The heavy gauge door frame hinges downward, on either side, and is held in the closed position by two positive cam latches. Latches use a positive locking cam action and come with matching finish. The metal-to-metal design of the door eliminates most light leaks.

#### MOUNTING

Swing arm mounting brackets, with vertical adjustability, are used to mount the fixture against the ceiling.

#### FINISH

Powder painted white. visible surfaces.

#### OPTICS

Standard diffuser is a clear, prismatic, pattern #12 extruded acrylic lens, designed for high efficiency and low glare illumination. Optional VF-1 reflectors are available.

#### ELECTRICAL

All electrical components are UL listed or CSA approved. See product selection for optional ballasts. Sufficient knockouts are provided for connections and through wiring.

#### APPROVALS

Approved to CSA and UL standards. (UL, or equivalent, marked only when specified.)

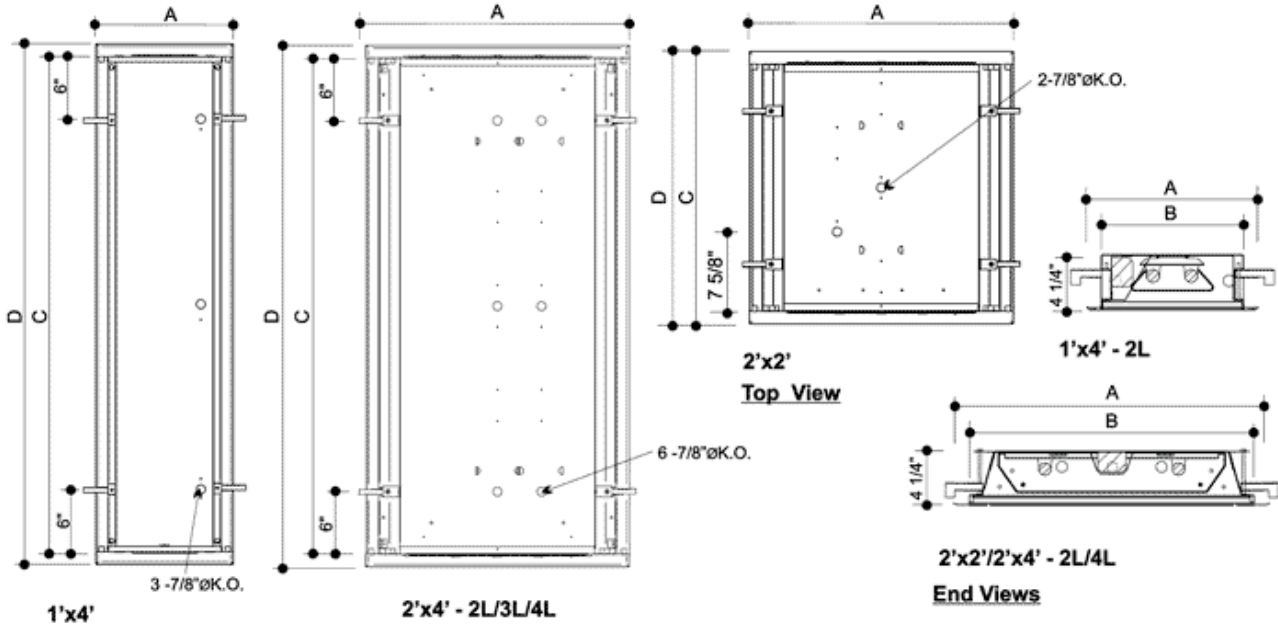
#### OPTIONS

- Dimmable ballasts, see product selection.
- 20 gauge riveted construction.
- Polycarbonate rotary lock lampholders.
- VF1- 95% reflectance, specular anodized aluminum reflector.
- Optional lenses and louvers, see Product Selection.
- Regressed aluminum door frame.
- Consumer packaging.
- No cartons - Bulk packed and wrapped on pallets.

#### OPTIONAL ADDERS

- Emergency lighting power pack.
- Fuse holder.
- Light leak gasketing.
- Radio interference filter.

### PRODUCT DIMENSIONS



**Top Views**

| MODEL CONFIGURATION | A        | B       | C   | D       |
|---------------------|----------|---------|-----|---------|
| 1'x4'               | 13 7/16" | 11"     | 48" | 50 1/4" |
| 2'x2'               | 25 3/8"  | 22 7/8" | 24" | 26 1/4" |
| 2'x4'               | 25 3/8"  | 22 7/8" | 48" | 50 1/4" |

### PRODUCT KEY

|       |     |    |   |    |    |   |     |   |  |         |
|-------|-----|----|---|----|----|---|-----|---|--|---------|
| MMAYR | 2x4 | 2L | - | T8 | 32 | P | 120 | - |  | Options |
|-------|-----|----|---|----|----|---|-----|---|--|---------|

|                              |                     |                   |                |
|------------------------------|---------------------|-------------------|----------------|
| <b>Size (Width x Length)</b> | <b>No. of Lamps</b> | <b>Lamp Watts</b> | <b>Voltage</b> |
| 1x4                          | 1L                  | See Table below   | 120 - 120V     |
| 2x2                          | 2L                  |                   | 240 - 240V     |
| 2x4                          | 3L                  |                   | 277 - 277V     |
|                              | 4L                  |                   | 347 - 347V     |
|                              | 6L                  |                   | 600 - 600V     |
|                              |                     |                   | UNV - 120-277V |
|                              |                     |                   | UN2 - 277-347V |
|                              |                     |                   | UN4 - 347-480V |

|                  |                     |
|------------------|---------------------|
| <b>Lamp Type</b> | <b>Ballast Type</b> |
| T8               | N - Instant Start   |
| T8U2             | P - Prog. Start     |
| T8U6             | R - Rapid Start     |
| PLL              |                     |

| Size | Nom. Lamp Watts         |                        |                      |                                 |
|------|-------------------------|------------------------|----------------------|---------------------------------|
|      | T8                      | T8U2                   | T8U6                 | PLL/Biax                        |
| 1x4  | 32<br>(1 or 2 lamps)    | 31<br>(2 or 4 lamps)   | 32<br>(2 lamps)      | 40, 50, 55<br>(2 or 4 lamps)    |
| 2x2  | 17<br>(2, 3 or 4 lamps) | 31<br>(2, or 4 lamps)  | 32<br>(1 or 2 lamps) | 40, 50, 55<br>(2, 3 or 4 lamps) |
| 2x4  | 32<br>(2,3,4 lamps)     | 31<br>(4,6,or 8 lamps) | 32<br>(2 or 4 lamps) | 40, 50, 55<br>(4,6,or 8 lamps)  |

**Ballast Options**

- B01 Ballast Disconnect - In-line Power Disconnect (CSA-UL Req'd For Voltages above 150v)
- B02 Dimming Addressable Digital (dali)
- B03 Dimming Low Voltage
- B04 Dimming Line Voltage
- B05 Frequency Universal DC-60hz
- B06 Low Temperature
- B08 Ballast - High Ballast Factor
- B09 Ballast - Low Ballast Factor
- B10 Remote Ballast Box
- B30 Emergency USA Lighting Battery Pack 1-lamp 3000 Lumen
- B31 Emergency CDN Lighting Battery Pack 1-lamp
- B32 Emergency CDN Lighting Battery Pack 2-lamp
- B33 Emergency USA Lighting Battery Pack 1-lamp
- B34 Emergency USA Lighting Battery Pack 2-lamp

**Housing Construction Options**

- C06 Housing 20 Gauge Riveted

**Door Frame Options**

- D2 Door Frame Regressed Aluminum

**Gasket Options**

- G2 Gasket Light Leak

**Lampholder Options**

- H4 Lampholder Rotary Lock
- H6 Lampholder Locking Biax

**Packaging Options**

- K0 Pack Bulk

**Louver Options (in place of lens, select one only)**

- L11 Louver 1/2 X 1/2 X 3/8 White Eggcrate Acrylic
- L12 Louver 1/2 X 1/2 X 3/8 White Eggcrate Styrene
- L13 Louver 1/2 X 1/2 X 1/2 Silver Parabolic Acrylic
- L14 Louver 1/2 X 1/2 X 1/2 Silver Parabolic Styrene
- L15 Louver 3/4 X 3/4 X 3/8 Silver Parabolic Acrylic
- L16 Louver 3/4 X 3/4 X 3/8 Silver Parabolic Styrene
- L17 Louver 3/4 X 3/4 X 3/8 Gold Parabolic Acrylic
- L18 Louver 3/4 X 3/4 X 3/8 Gold Parabolic Styrene
- L19 Louver 3/4 X 3/4 X 1/2 Silver Parabolic Acrylic
- L20 Louver 3/4 X 3/4 X 1/2 Silver Parabolic Styrene
- L21 Louver 1-1/2 X 1-1/2 X 1 Silver Parabolic Acrylic
- L22 Louver 1-1/2 X 1-1/2 X 1 Silver Parabolic Styrene

**Lens and Shielding Options (select one only)**  
(Prismatic Acrylic - P12 is standard)

- P01 Drop Dish Acrylic Shaped Vacuum Formed Opal
- P04 Lens Acrylic Smooth Opal
- P13 Lens Prismatic Acrylic - P12 Nominal 0.125" Thick
- P15 Lens Prismatic High Impact Acrylic - P12
- P16 Lens Prismatic Polycarbonate - P12

**Fusing and Breaker Options (select one only)**

- T5 Fuseholder, In-line Double Pole
- T6 Fuseholder, In-line Single Pole

**Wiring Options**

- V05 Cord And Plug Set Three Wire (standard 10' X 3-18 Ga.)
- V06 Flexible Feed Cord (single circuit only)
- V09 Flexible Whip (standard 6' X 3-18 Ga.)
- V19 Modular Wiring System. (consult Factory.)
- V25 Radio Frequency Filter

**Reflector Options**

- VF1 Reflector VF1 Specular (95% Reflectance) Aluminum

**Approval and Rating Options**

- X6 USA Market

**Lamp Options**

- Z1 Lamps installed (specify type)