

TROFFER DISH CENTER BAFFLE

Recessed Direct/Indirect T-Bar Luminaire

FEATURES

Single, basket shaped perforated metal shield with integrated crossblade baffle.

Translucent, opal white acrylic diffuser overlay.

Clean appearance. No exposed fasteners.

Uses T5, T8 or Biax lamps.

APPLICATIONS

Office Areas
Retail Stores
Class Rooms
Corridors



APPLICATION FEATURES

Premium-grade, recessed, high performance, lay-in direct/indirect covered T-bar troffer with modern styling and high visual comfort. Comes with single basket shaped perforated metal shield with integrated metal crossblade baffle. Available in 2'x2' and 2'x4' configurations. Shallow design accommodates mounting into low ceiling plenums. For use in indoor applications where low glare, high quality and ease of installation are required.

CONSTRUCTION

Die and brake formed, heavy gauge cold rolled steel housing assembly. Precision formed, cold rolled steel reflector. Die formed, perforated cold rolled steel shielding. Metal shielding flexes over mounting studs on housing, for easy installation and re-lamping. Wiring access plate or knockouts are provided on back of housing, for flexible conduit attachment.

MOUNTING

Holes provided for chain mounting support to building structure. Integral earthquake clips.

FINISH

Powder painted matte white visible surfaces.

OPTICS

Shields are perforated for direct illumination and contain a translucent opal white acrylic overlay diffuser for visual comfort. Integrated metal crossblade baffle with white overlay provides low glare while increasing the direct illumination and overall efficiency. Indirect reflectors are precision formed and contoured to provide soft, low glare indirect illumination while maintaining high efficiency and a wide uniform lighting distribution.

ELECTRICAL

All electrical components are UL listed or CSA approved Lamp holders provided ensure positive lamp retention. Fixtures are provided with an access plate, to facilitate wiring to external power source. Sufficient knockouts are provided for connections and through wiring. Approximately 6" ballast leads extend through wiring access cover, in order to facilitate external wiring of luminaire.

APPROVALS

Approved to CSA and UL standards. (UL, or equivalent, marked only when specified.)

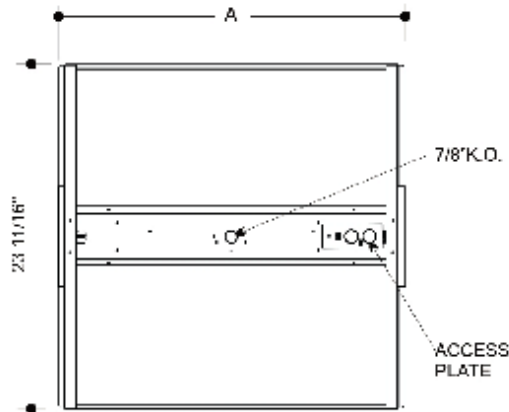
OPTIONS

- Non perforated matte white shield.
- 20 gauge welded construction.
- Air supply/return slots.
- Polycarbonate rotary lock lampholders.
- No cartons - Bulk packed and wrapped on pallets.

OPTIONAL ADDERS

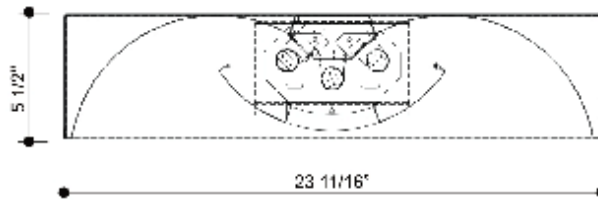
- Emergency lighting power pack.
- Radio interference filter.
- Fuse holder.
- Flexible metal whip - 6' x 3/18 gauge conductors.
- Modular wiring system (consult factory).

PRODUCT DIMENSIONS



Top View

MODEL	NOMINAL LENGTH	A
2x2	24"	23 3/4"
2x4	48"	47 3/4"



2x2/2x4

Cross Section

PRODUCT KEY

TDCB 2x4 2L - T8 32 P 120 - Options

Size (Width x Length)
2x2
2x4

No. of Lamps
2L
3L

Lamp Watts
See Table below

Voltage
120 - 120V
240 - 240V
277 - 277V
347 - 347V
600 - 600V
UNV - 120-277V
UN2 - 277-347V
UN4 - 347-480V

Lamp Type
T5
T5HO
T8
T8HO
T8VHO
PLL

Ballast Type
N - Instant Start
P - Prog. Start
R - Rapid Start

Air Handling Options

- A1 Air Supply/return Slots

Ballast Options

- B01 Ballast Disconnect - In-line Power Disconnect (CSA-UL Req'd For Voltages above 150v)
- B02 Dimming Addressable Digital (dali)
- B03 Dimming Low Voltage
- B04 Dimming Line Voltage
- B08 Ballast - High Ballast Factor
- B09 Ballast - Low Ballast Factor
- B30 Emergency USA Lighting Battery Pack 1-lamp 3000 Lumen
- B31 Emergency CDN Lighting Battery Pack 1-lamp
- B32 Emergency CDN Lighting Battery Pack 2-lamp
- B33 Emergency USA Lighting Battery Pack 1-lamp
- B34 Emergency USA Lighting Battery Pack 2-lamp

Housing Construction Options

- C07 Housing 20 Gauge Welded
- C25 Shield Non-Perforated Matte White

Lampholder Options

- H4 Lampholder Rotary Lock
- H6 Lampholder Locking Biax

Packaging Options

- K0 Bulk Pack

Louver and Baffle Options

- L01 Baffle Integrated Metal Crossblade

Fusing and Breaker Options (select one only)

- T5 Fuseholder, In-line Double Pole
- T6 Fuseholder, In-line Single Pole

Lamp Watts

Size	Nom. Lamp Watts					
	T5	T5HO	T8	T8HO	T8VHO	PLL/BiAx
2x2	14	24	17	-	-	40, 50 55
2x4	28	54	32	44	84	40, 50, 55

Wiring Options

- V05 Cord And Plug Set Three Wire (standard 10' X 3-18 Ga.)
- V09 Flexible Whip (standard 6' X 3-18 Ga.)
- V19 Modular Wiring System. (consult Factory.)
- V25 Radio Frequency Filter

Approval and Rating Options

- X6 USA Market
- X7 CSA and USA Market