

### INDUSTRIAL TWO LAMP

Premium Industrial Luminaire

#### FEATURES

Flip-up socket bars.

Available with full, half and asymmetrical reflectors.

Single piece reflectors for 6' and 8' lamps.

Continuous raceway and row mounting capability.

Surface, stem, or chain mountable.

Uses T8 or T12 lamps.

Steel housing and ends with white enamel finish.

Available in aluminum, for salty or corrosive environments.



#### APPLICATION FEATURES

Mid-grade, fluorescent industrial fixture. For use in indoor applications where low cost, but industrial grade ruggedness is required. Available in lengths from 18 to 96 inches. Socket bar flips up for easy installation. Converts to raceway for continuous row mounting.

#### APPLICATIONS

Warehouse Aisles  
Warehouse Areas  
Manufacturing Areas  
Garage and Workshops  
Utility Area  
Large Storage Rooms  
Coves

#### CONSTRUCTION

Die and brake formed, code gauge pre-painted white cold rolled steel. Screw fastened end plates can be repositioned to serve as joiners for continuous row mounting, thus forming a continuous, uninterrupted wireway (on non-welded units only). Single piece reflector on non-tandem units. Knockouts are provided for flexible conduit attachment.

#### MOUNTING

Knock-outs are provided for stem mounting. Mounting holes are provided. Optional V (Speedy) hangers accommodate chain (not provided).

#### FINISH

Pre-painted high reflectance white.

#### OPTICS

Standard reflectors are solid and are coated with a durable, high reflectance white finish. Optional reflectors are available with 1/2 reflector or asymmetric cutoffs. Optional reflectors are available with a slotted upright component. Optional reflector configurations are available in VF-1, high reflectance (95%) specular aluminum.

#### ELECTRICAL

All electrical components are UL listed or CSA approved Lamp holders provided ensure positive lamp retention. Lamp holders with rotary locks are available. See product selection for optional ballasts. Sufficient knockouts are provided on the back and ends for connections and through wiring.

#### APPROVALS

Approved to CSA and UL standards. (UL, or equivalent, marked only when specified.)

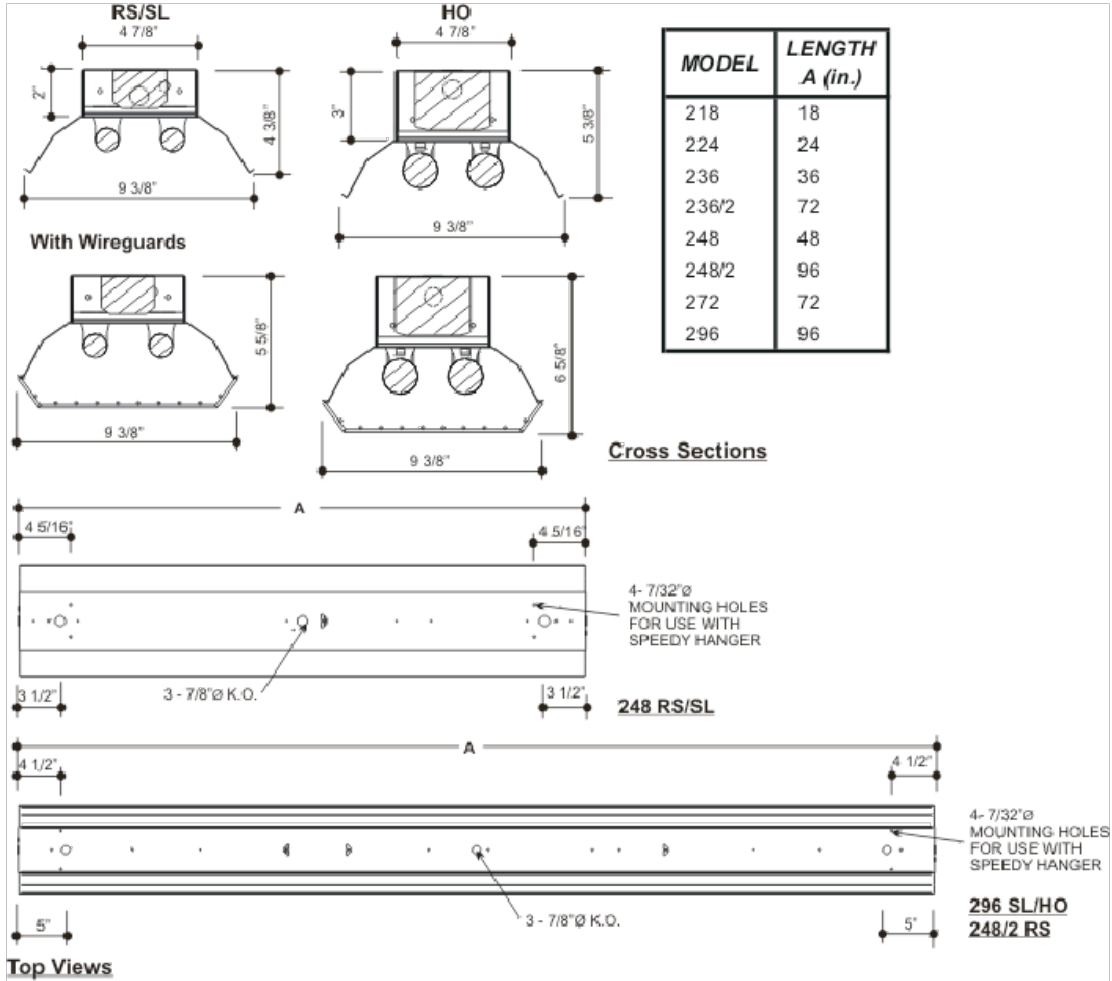
#### OPTIONS

- Slotted full reflector, painted white.
- 14" reflector, painted white.
- Asymmetric reflector, painted white.
- 1/2 reflector, painted white.
- VF1- 95% reflectance, specular anodized aluminum reflector.
- 20 gauge riveted construction.
- 20 gauge welded construction.
- Dimmable ballasts, see product selection.
- Individual & custom packaging (select models only).
- No cartons - Bulk packed and wrapped on pallets.

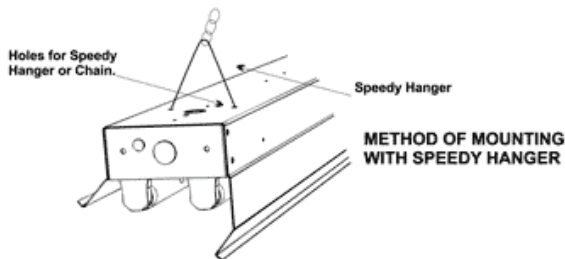
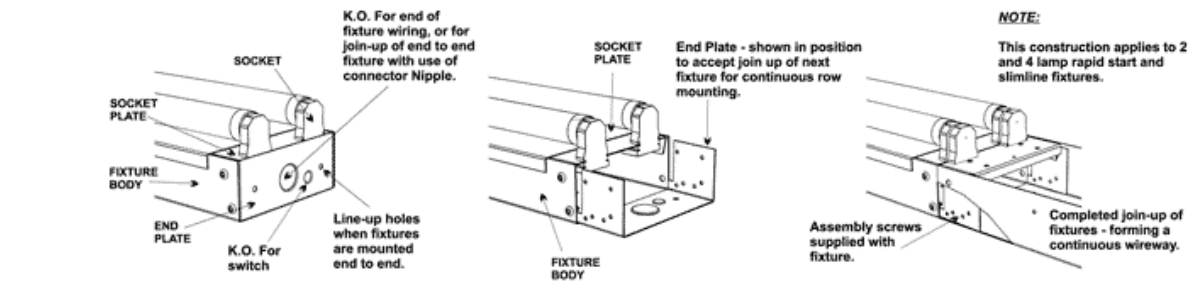
#### OPTIONAL ADDERS

- Heavy duty wire guards powder coated white finish, comes with mounting hardware.
- Fuse holder.
- Pull chain switch
- Aligner clips, for row mounting.
- Speedy hangers.

### PRODUCT DIMENSIONS



#### METHOD OF ASSEMBLY FOR CONTINUOUS ROW MOUNTING



### PRODUCT KEY

IND	2	48	-	T8	32	P	120	-		<b>Options</b>
-----	---	----	---	----	----	---	-----	---	--	----------------

<b>No. Of Lamps</b> Typical Number of lamps in Cross Section 2	<b>Nom. Length (in.)</b> 18 24 36 48 60 72 96	<b>Lamp Type</b> T8 T8HO T8VHO T12SL T12HO	<b>Lamp Watts</b> See Table below	<b>Voltage</b> 120 - 120V 240 - 240V 277 - 277V 347 - 347V 600 - 600V UNV - 120-277V UN2 - 277-347V UN4 - 347-480V	<b>No. of Lamps Option (in Cross Section)</b> (Blank) - N/A 1L - 1 lamp 3L - 3 Lamp	<b>Ballast Type</b> N - Instant Start P - Prog. Start R - Rapid Start	<b>Ballast Options</b> <input type="checkbox"/> B01 Ballast Disconnect - In-line Power Disconnect (CSA-UL Req'd For Voltages above 150v) <input type="checkbox"/> B02 Dimming Addressable Digital (dali) <input type="checkbox"/> B03 Dimming Low Voltage <input type="checkbox"/> B04 Dimming Line Voltage <input type="checkbox"/> B05 Frequency Universal DC-60hz <input type="checkbox"/> B06 Low Temperature <input type="checkbox"/> B08 Ballast - High Ballast Factor <input type="checkbox"/> B09 Ballast - Low Ballast Factor
--	--	---	--------------------------------------	--	--	--	--

<b>Tandem</b> (Blank) - N/A /2 - Single Housing T2 - Two Disjointed Housings	<b>Housing Construction Options (select one only)</b> <input type="checkbox"/> C06 Housing 20 Gauge Riveted <input type="checkbox"/> C07 Housing 20 Gauge Welded <input type="checkbox"/> C08 Housing Aluminum	<b>Lampholder Options</b> <input type="checkbox"/> H4 Lampholder Rotary Lock	<b>Packaging Options (select one only)</b> <input type="checkbox"/> K0 Pack Bulk <input type="checkbox"/> K1 Pack Single	<b>Mounting Options</b> <input type="checkbox"/> M20 Mounting Row Aligner Clip <input type="checkbox"/> M23 Mounting Speedy Hanger <input type="checkbox"/> M30 Mounting Suspension Set (speedy hangers with 48-in chains)	<b>Reflector Options (select one only) (solid full white is standard)</b> <input type="checkbox"/> R03 Reflector Slotted Full White <input type="checkbox"/> R04 Reflector Solid 1/2 White <input type="checkbox"/> R06 Reflector Solid Asymmetrical White <input type="checkbox"/> R07 Reflector Solid Full 14-in White  <input type="checkbox"/> VF1 Reflector VF1 Solid Full (95% Reflectance) Specular	<b>Switch Options (select one only)</b> <input type="checkbox"/> S1 Switch Pull-chain <input type="checkbox"/> S5 Switch Toggle <input type="checkbox"/> S6 Switch Turn	<b>Fusing and Breaker Options (select one only)</b> <input type="checkbox"/> T5 Fuseholder, In-line Double Pole <input type="checkbox"/> T6 Fuseholder, In-line Single Pole	<b>Wiring Options</b> <input type="checkbox"/> V02 Convenience Outlet <input type="checkbox"/> V08 Flexible Feed Cord (single circuit only)	<b>Wireguard Options (select one only)</b> <input type="checkbox"/> W1 Wireguard Heavy Duty Painted <input type="checkbox"/> W2 Wireguard Heavy Duty Zinc Plated	<b>Approval and Rating Options</b> <input type="checkbox"/> X6 USA Market
---	---	---	--	---	--	--	---	---	--	--

Length	Nominal Lamp Watts			Lamp Length (in)	
	T8	T8HO	T8VHO	T12SL	T12HO
18	15	-	-	-	-
24	17	-	-	-	-
36	25	-	-	-	-
48	32	44	84	-	-
60	40	55	-	60	60
72	-	65	-	72	72
96	59	86	-	96	96