

COMMERCIAL FOUR LAMP

Premium Strip Fixture

FEATURES

Flip-up socket bars.

Continuous raceway and row mounting capability.

Surface, stem, or chain mountable.

Uses T8 or T12 lamps.

Available in 1, 2, 3 or 6 lamp configuration.

Steel housing and ends with white enamel finish.

Available in aluminum, for salty or corrosive environments.



APPLICATIONS

*Retail Stores
Manufacturing Areas
Warehouse Areas
Warehouse Aisles
Utility Area
Large Storage Rooms*

APPLICATION FEATURES

Mid-grade, fluorescent strip fixture. For use in indoor applications where low cost, but industrial grade ruggedness is required. Socket bar flips up for easy installation. Available in lengths from 24 to 96 inches. Converts to raceway for continuous row mounting.

CONSTRUCTION

Die and brake formed, code gauge pre-painted white cold rolled steel. Screw fastened end plates can be repositioned to serve as joiners for continuous row mounting, thus forming a continuous, uninterrupted wireway (on non-welded units only). Single wireway cover on non-tandem units. Knockouts are provided for flexible conduit attachment.

MOUNTING

Knock-outs are provided for stem mounting. Mounting holes are provided. Provision for chain mounting included.

FINISH

Pre-painted high reflectance white.

ELECTRICAL

All electrical components are UL listed or CSA approved Lamp holders provided ensure positive lamp retention. Lamp holders with rotary locks are available. Sufficient knockouts are provided on the back and ends for connections and through wiring.

APPROVALS

Approved to CSA and UL standards. (UL, or equivalent, marked only when specified.)

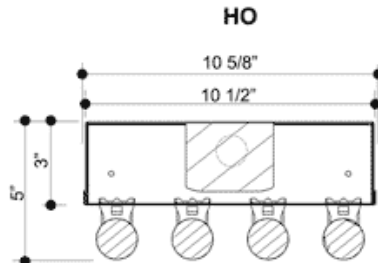
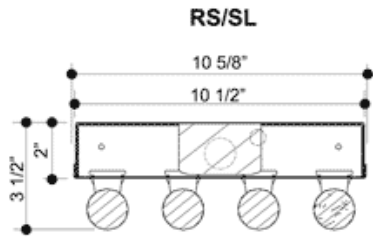
OPTIONS

- 20 gauge riveted construction.
- 20 gauge welded construction.
- Dimmable ballasts, see product selection.
- Polycarbonate rotary lock lampholders.
- Individual & custom packaging (select models only).

OPTIONAL ADDERS

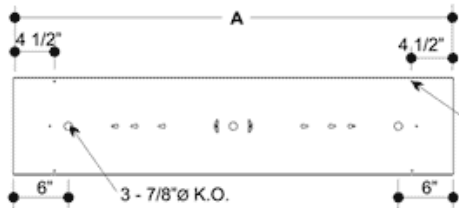
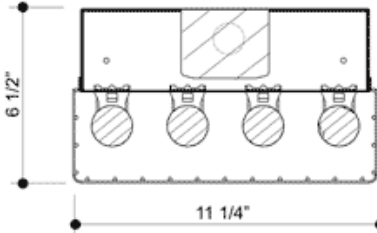
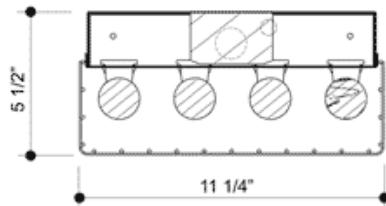
- Pull chain switch
- Fuse holder.
- Turn switch
- Toggle switch.
- Heavy duty wire guards powder coated white finish, comes with mounting hardware.

PRODUCT DIMENSIONS



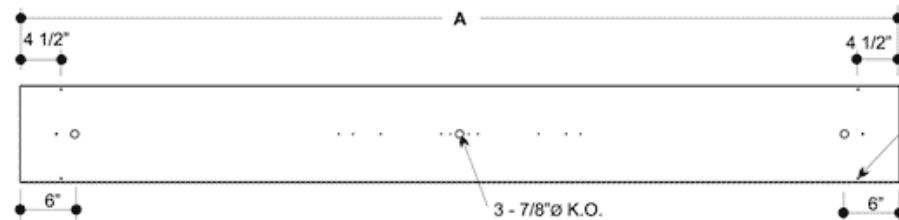
MODEL		LENGTH A (in.)
324	424	24
336	436	36
336/2	436/2	72
348	448	48
348/2	448/2	96
----	448/436	84
372	472	72
396	496	96

With Wireguards



Cross Sections

6 - 7/32"Ø
MOUNTING HOLES
448 RS/SL

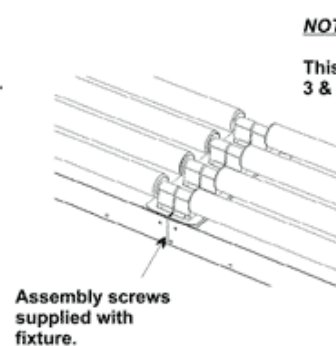
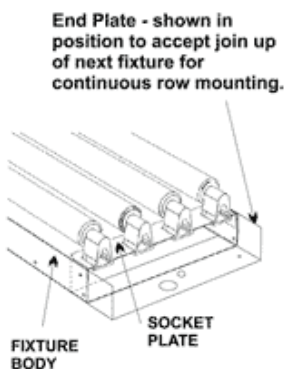
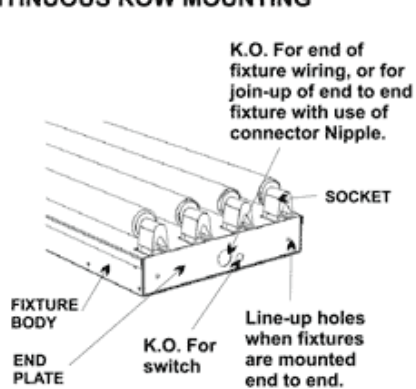


6 - 7/32"Ø
MOUNTING HOLES
FOR USE WITH
CHAIN & S - HOOK

496 SL/HO
448/2 RS

Top Views

METHOD OF ASSEMBLY FOR CONTINUOUS ROW MOUNTING



NOTE:

This construction applies to all 3 & 4 lamp fixtures.

Completed join-up of fixtures - forming a continuous wireway.

PRODUCT KEY

COM	4	48	-	T8	32	P	120	-		Options
-----	---	----	---	----	----	---	-----	---	--	----------------

No. Of Lamps
Typical Number of lamps in Cross Section
4

Nom. Length (in.)
24
36
48
72
96

Lamp Watts
See Table below

Lamp Type
T8
T8HO
T8VHO
T12SL
T12HO

Tandem
(Blank) - N/A
/2 - Single Housing
/36 - Single Housing
Add 36"

Voltage
120 - 120V
240 - 240V
277 - 277V
347 - 347V
600 - 600V
UNV - 120-277V
UN2 - 277-347V
UN4 - 347-480V

No. of Lamps Option (in Cross Section)
(Blank) - N/A
1L - 1 lamp
2L - 2 lamps
3L - 3 lamps

Ballast Type
N - Instant Start
P - Prog. Start
R - Rapid Start

Ballast Options

B01

B02

B03

B04

B05

B06

B08

B09

Housing Construction Options (select one only)

C6 Housing 20 Gauge Riveted

C7 Housing 20 Gauge Welded

C8 Housing Aluminum

Lampholder Options

H4 Lampholder Rotary Lock

Packaging Options (select one only)

K0 Pack Bulk

K1 Pack Single

Mounting Options

M23 Mounting Speedy Hanger

M30 Mounting Suspension Set (speedy hangers with 48-inch chains)

Switch Options (select one only)

S1 Switch Pull-chain

S5 Switch Toggle

S6 Switch Turn

Fusing and Breaker Options (select one only)

T5 Fuseholder, In-line Double Pole

T6 Fuseholder, In-line Single Pole

Wiring Options

V02 Convenience Outlet

V08 Flexible Feed Cord (single circuit only)

Wireguard Options

W1 Wireguard Heavy Duty Painted

W2 Wireguard Heavy Zinc Plated

Approval and Rating Options

X6 USA Market

Lamp Watts

Length	Nominal Lamp Watts			Lamp Length (in)	
	T8	T8HO	T8VHO	T12SL	T12HO
24	17	-	-	-	-
36	25	-	-	-	-
48	32	44	84	-	-
72	-	65	-	72	72
96	59	86	-	96	96